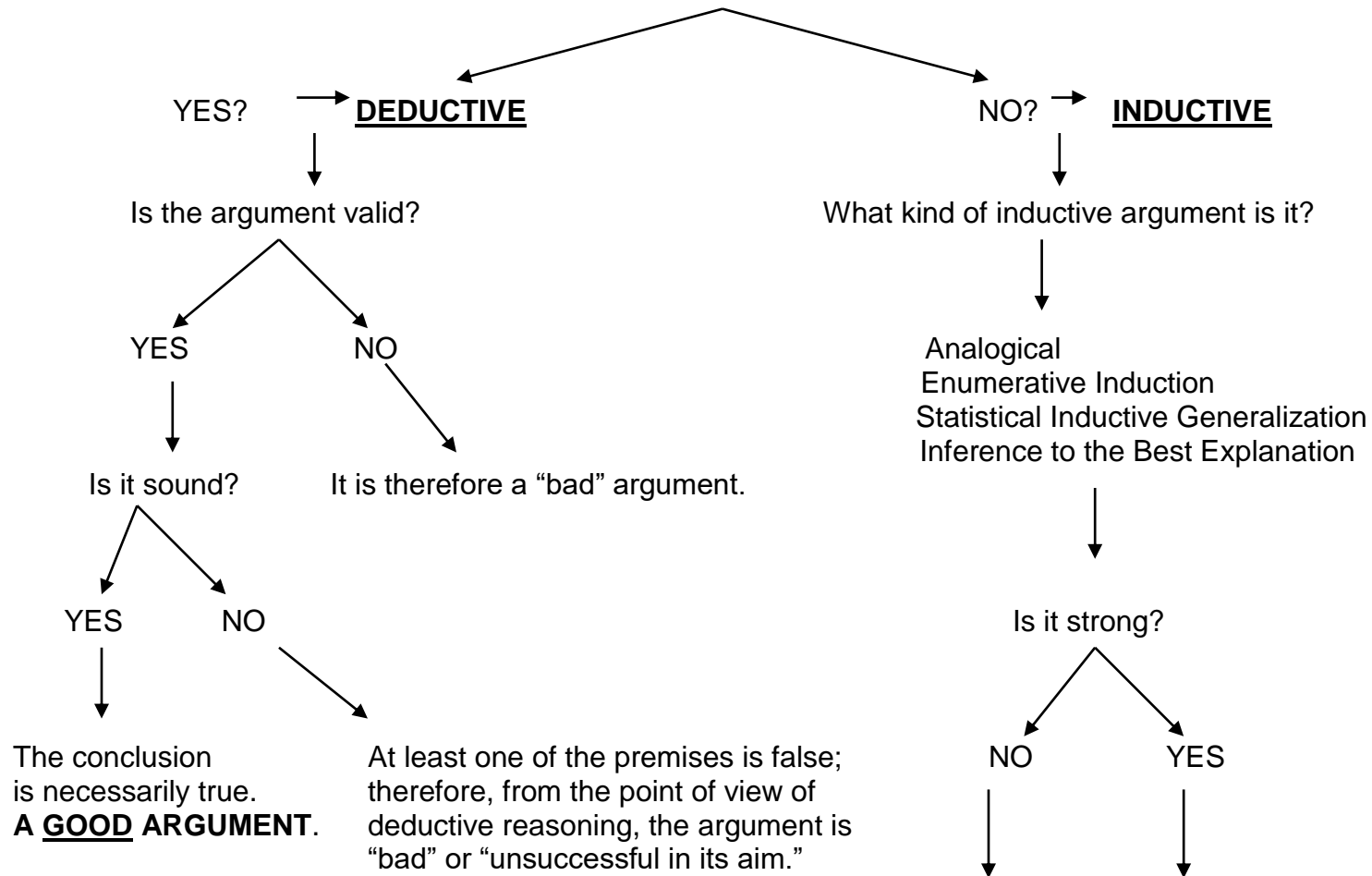


A BASIC APPROACH TO ARGUMENT EVALUATION

To be followed after you have established the presence of an argument.

© 2000-2018 Lawrence Udell Fike, Jr.

Is the intention for the argument to be valid?



* If the premises of a strong inductive argument are all as a matter of fact true, then we say that such an argument is **cogent**. A cogent argument is **A GOOD ARGUMENT**.

The probability that the conclusion is true is relatively unsupported by the premises.

A "bad" argument.

The probability that the conclusion is true is relatively highly supported by the premises.

*Now see bottom left of sheet.